

Instructions – Parts List



Rolling Drain Cart

307727M

For collecting used oil in a fast-lube facility.

Model 218969

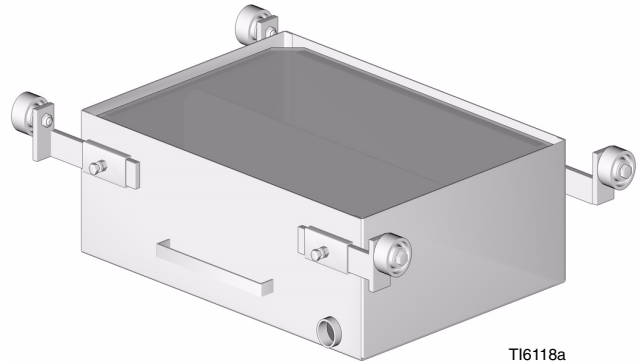
30 Gallon Capacity

Model 235346

27 Gallon Capacity



Read warnings and instructions.



TI6118a

WARNING

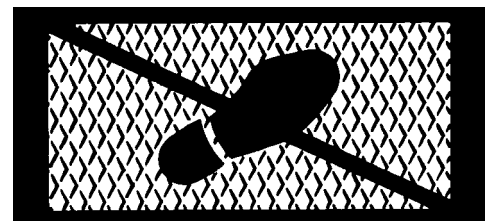
To reduce the risk of the cart falling off the track of the service pit, which could result in serious injury to any person near the cart:

Never extend the wheel arm further than flush with the inside edge of the arm guide. See Fig. 1.

Be sure the bolts (6) are torqued into the nuts (11) to 45–55 ft-lb (62–75 N•m). See Fig. 1.

WARNING

Do not use the drain cart as a step.



Installation

Install the wheels (5) and arms (16–right, 19–left) in the arm guides. Extend the arms equally on each side of the pan to fit the service pit tracks, but do not extend them further than the inside end of the arm guides. Refer to the Dimensional Drawing (page 4) for maximum extension. Torque bolts (6) into nuts (11) to 45–55 ft-lb (62–75 N•M).

Kit No. 218970 (parts marked with *) is available for connecting two carts together and draining one into the other. See Fig. 2.

To drain oil from the pan, connect a suitable hose to the 1–1/2 npt(f) ball valve (8) and open the valve. Be sure to close the valve before using the pan.

Parts Drawing

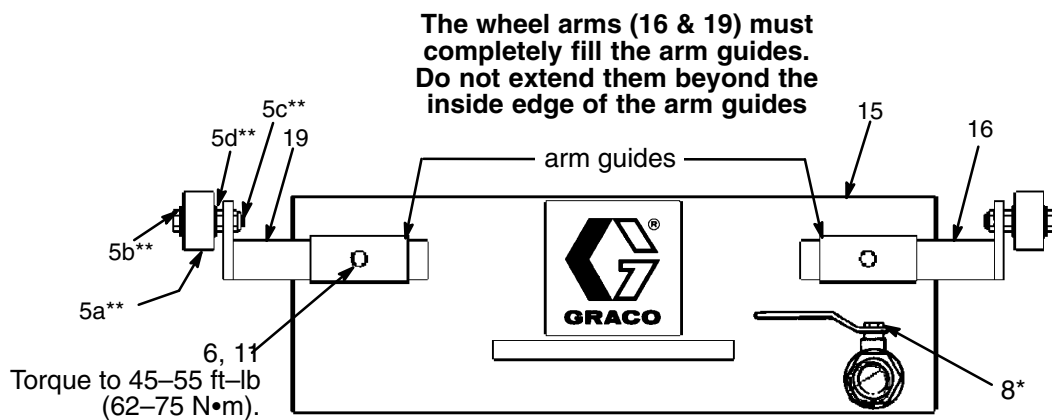


Fig. 1

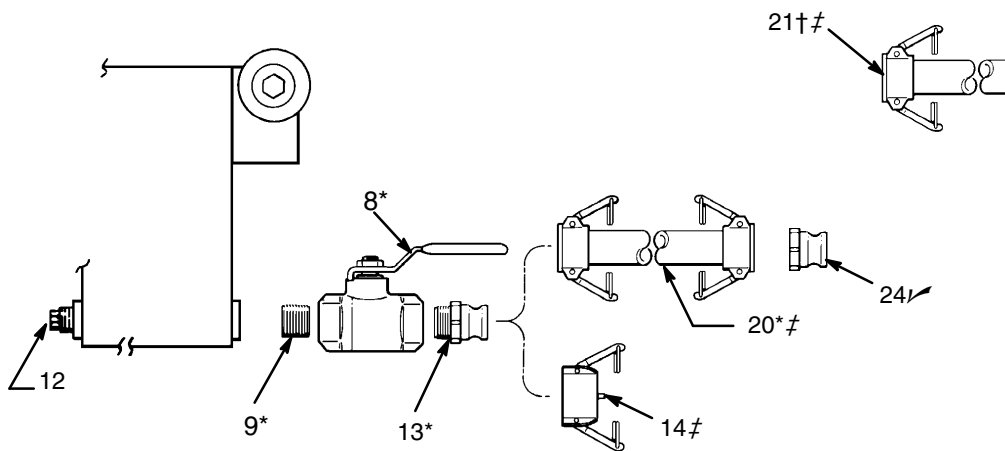


Fig. 2

Parts List

Models 218969 and 235346

Ref No.	Part No.	Description	Qty.	Ref No.	Part No.	Description	Qty.
5	249102	KIT, wheel (Includes 5a–5d)	4	12		PLUG, pipe; 1–1/2 in. npt	1
5a**		Wheel	1	13*	108202	CAMLOCK, male,; 1–1/2 in. npt	1
5b**		BOLT, hex head; 5/8–11 UNC x 3.25 lg	1	14‡	108203	CAP, adapter	1
5c**		NUT, lock; 5/8–11 UNC x .406 hgt	1	15	222350	GRATE (218969)	1
5d**	100681	NUT, jam, 5/8–11 UNC x .375 hgt	1		235348	GRATE (235346)	1
6		BOLT, hex head; 1/2–13 UNC x 1.25 lg	4	16	222000	ARM, roller, rh	2
				19	222626	ARM, roller, lh	2
8*	108204	VALVE, ball	1	20*‡	108205	HOSE, coupled	1
9*	108209	NIPPLE, pipe close	1	21†‡	108491	HOSE, single coupler	1
10	108710	TAG, caution	1	22	112857	WASHER, sealing (replacement washer for ‡ items)	
11	100338	NUT, jam, 1/2–13 UNC x .313 hgt	4	24✓	108201	PLUG, camlock, male	1

* These parts are included in Conversion Kit 218970, which may be purchased separately.

** These parts are included in Wheel Repair Kit 249102, which may be purchased separately.

† Optional hose, same as 108205 except that it has only 1 coupler.

‡ For replacement sealing washer, order item 22.

✓ To plug hose (20) when not in use. Must be purchased separately.

Dimensional Drawing

Model 218969:

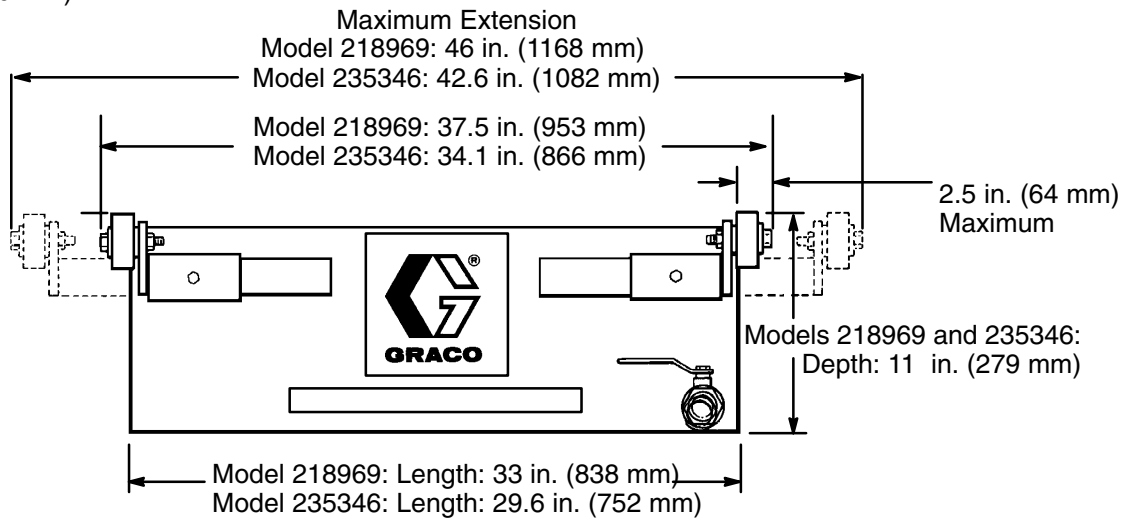
Weight: 120 lb (54 Kg)

Width: 24" (610 mm)

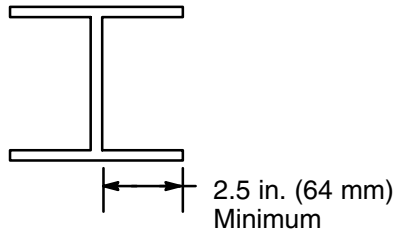
Model 235346:

Weight: 113 lb (51 Kg)

Width: 24" (610 mm)



I-Beam Dimension
Required For Wheel
And Bolt Heads



This image shows a full page of blank, lined paper. It features approximately 20 horizontal grey lines spaced evenly apart, typical of notebook paper. The lines extend across the entire width of the page, leaving small margins at the top and bottom. There are no vertical lines or other markings present.

Graco Standard Warranty

Graco warrants all equipment manufactured by Graco and bearing its name to be free from defects in material and workmanship on the date of sale to the original purchaser for use. With the exception of any special, extended, or limited warranty published by Graco, Graco will, for a period of twelve months from the date of sale, repair or replace any part of the equipment determined by Graco to be defective. This warranty applies only when the equipment is installed, operated and maintained in accordance with Graco's written recommendations.

This warranty does not cover, and Graco shall not be liable for general wear and tear, or any malfunction, damage or wear caused by faulty installation, misapplication, abrasion, corrosion, inadequate or improper maintenance, negligence, accident, tampering, or substitution of non-Graco component parts. Nor shall Graco be liable for malfunction, damage or wear caused by the incompatibility of Graco equipment with structures, accessories, equipment or materials not supplied by Graco, or the improper design, manufacture, installation, operation or maintenance of structures, accessories, equipment or materials not supplied by Graco.

This warranty is conditioned upon the prepaid return of the equipment claimed to be defective to an authorized Graco distributor for verification of the claimed defect. If the claimed defect is verified, Graco will repair or replace free of charge any defective parts. The equipment will be returned to the original purchaser transportation prepaid. If inspection of the equipment does not disclose any defect in material or workmanship, repairs will be made at a reasonable charge, which charges may include the costs of parts, labor, and transportation.

THIS WARRANTY IS EXCLUSIVE, AND IS IN LIEU OF ANY OTHER WARRANTIES, EXPRESS OR IMPLIED, INCLUDING BUT NOT LIMITED TO WARRANTY OF MERCHANTABILITY OR WARRANTY OF FITNESS FOR A PARTICULAR PURPOSE.

Graco's sole obligation and buyer's sole remedy for any breach of warranty shall be as set forth above. The buyer agrees that no other remedy (including, but not limited to, incidental or consequential damages for lost profits, lost sales, injury to person or property, or any other incidental or consequential loss) shall be available. Any action for breach of warranty must be brought within two (2) years of the date of sale.

Graco makes no warranty, and disclaims all implied warranties of merchantability and fitness for a particular purpose in connection with accessories, equipment, materials or components sold but not manufactured by Graco. These items sold, but not manufactured by Graco (such as electric motors, switches, hose, etc.), are subject to the warranty, if any, of their manufacturer. Graco will provide purchaser with reasonable assistance in making any claim for breach of these warranties.

In no event will Graco be liable for indirect, incidental, special or consequential damages resulting from Graco supplying equipment hereunder, or the furnishing, performance, or use of any products or other goods sold hereto, whether due to a breach of contract, breach of warranty, the negligence of Graco, or otherwise.

FOR GRACO CANADA CUSTOMERS

The parties acknowledge that they have required that the present document, as well as all documents, notices and legal proceedings entered into, given or instituted pursuant hereto or relating directly or indirectly hereto, be drawn up in English. Les parties reconnaissent avoir convenu que la rédaction du présente document sera en Anglais, ainsi que tous documents, avis et procédures judiciaires exécutés, donnés ou intentés à la suite de ou en rapport, directement ou indirectement, avec les procédures concernées.

Graco Information

TO PLACE AN ORDER, contact your Graco distributor, or call one of the following numbers to identify the distributor closest to you:

1-800-533-9655 Toll Free

612-623-6928

612-378-3590 Fax

Graco Headquarters: Minneapolis
International Offices: Belgium, Korea, China, Japan

www.graco.com

GRACO INC. P.O. BOX 1441 MINNEAPOLIS, MN 55440-1441

PRINTED IN U.S.A. 307727 12/1984, Revised 11/2004